

# **UC Links Annual Conference 2019**

## **Linking Voices - Bridging Institutional Cultures**

### **Y-PLAN Communities of Practice**

**Deborah McKoy**  
Center for Cities + Schools  
GSE & DCRP  
UC Berkeley

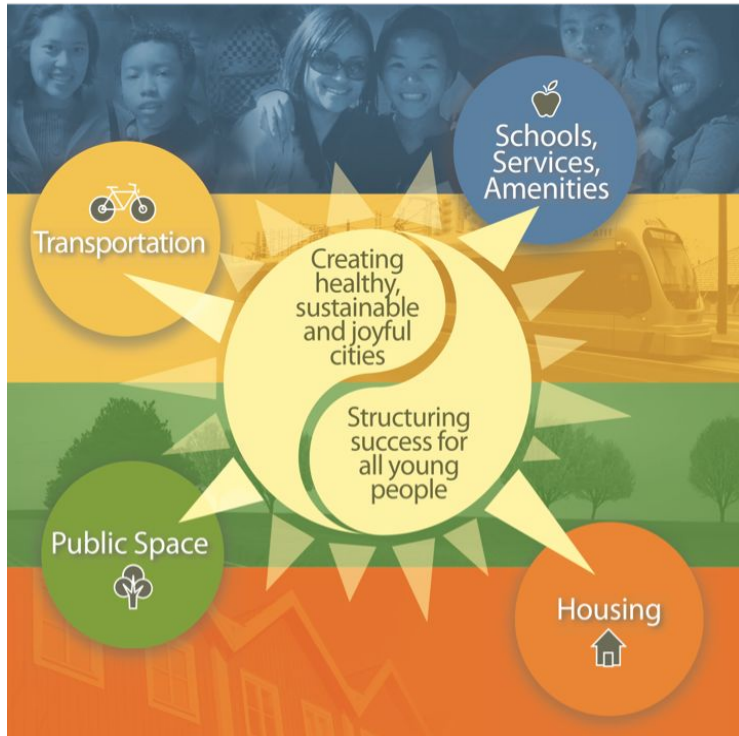
# UC Berkeley Center for Cities + Schools



## Mission:

To promote high quality education as an essential component of urban and metropolitan vitality to create **equitable, healthy, sustainable and joyful** communities for all.

# Our heartbeat: Y-PLAN



- ❖ A UC Links Course - GSE and DCRP
- ❖ A civic learning, educational strategy and action research initiative in city planning
- ❖ A global network of over 1,000 young people, educators and civic leaders working together to combat our cities biggest challenges

# WHY-PLAN?

If we improve the community, will we still be able to afford to live in it?

How can we feel safer biking and walking to and from school?

Why don't our bus stops have benches and provide shelter?

How can my community prepare for climate change?

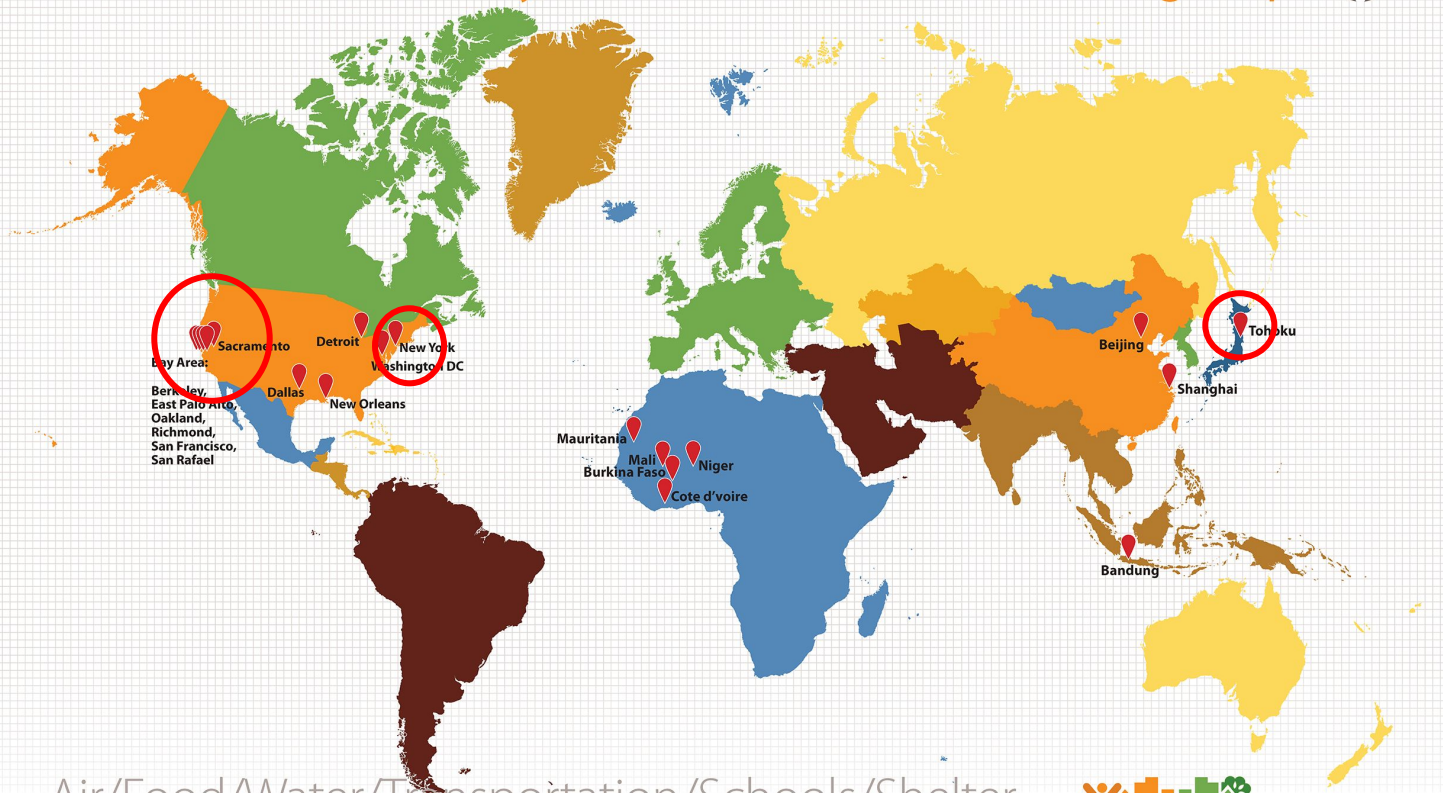
Why is there so much violence on our streets?

**Why are the conditions the way  
they are here, and not in  
another part of  
our city?**

# **WHY NOT?**

## Y-PLAN GLOBAL ACTION EXCHANGE 2018

How Can We Plan **Healthy, Vibrant** Cities for and With **Young People**?



Air/Food/Water/Transportation/Schools/Shelter  
Community/Education/Jobs+Careers/Health Care



# Y-PLAN Roadmap

## Utilizing urban planning to engage young people in community/civic change



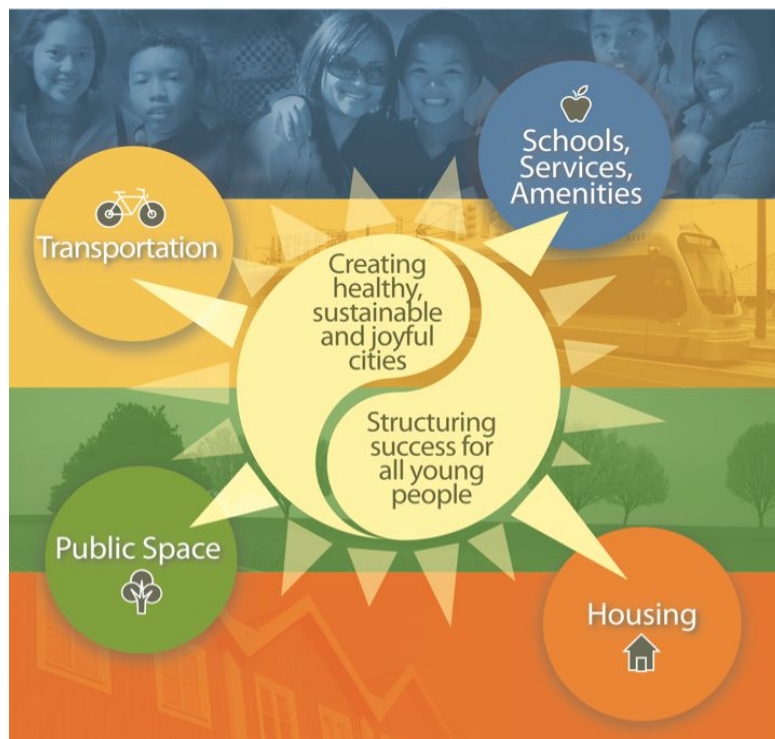
## 5 STEP METHODOLOGY

# Y-PLAN participants navigate multiple communities of practice

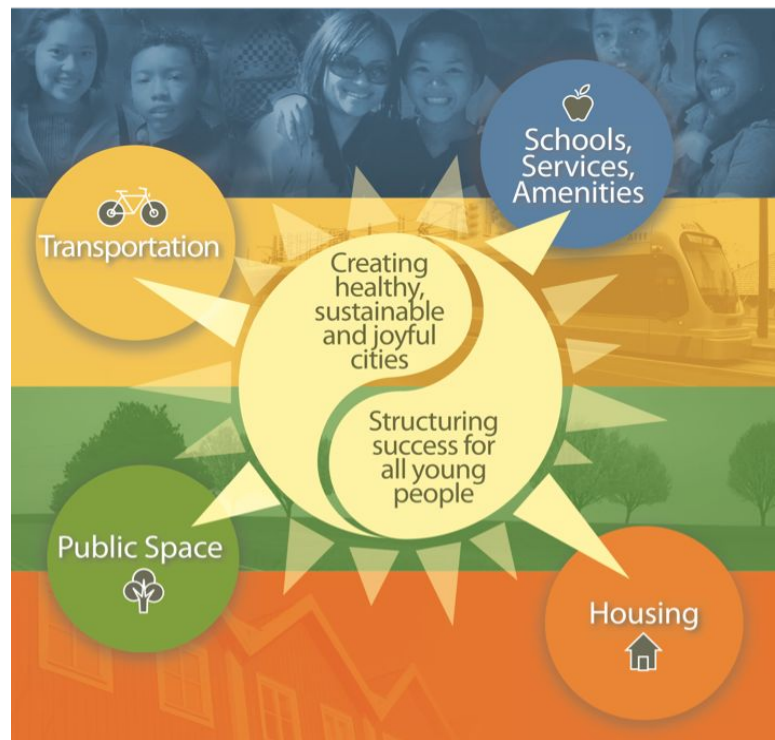




# Y-PLAN projects address *four* core urban sectors



# Y-PLAN Institutional Partners



# Y-PLAN Institutional Partners: Higher Ed



## **Bridge:**

Leverage cross sector interest and Chancellor's focus on discovery learning for undergraduate education



## **Divide:**

Interdisciplinary courses still remain at periphery of academic departments

# Y-PLAN Institutional Partner: K-12



## **Bridge:**

Brings authentic practice inside K-12 classroom, integration into school day rather than after-school



## **Divide:**

Competing always with existing school based curricular demands and “standards” - and notions of what “school” looks like

# Y-PLAN Institutional Partner: Cities



## **Bridge**

Essential to have multi-year (3 year) departnership for authentic collaboration and network ie NOMA



## **Divide:**

Leadership turnover and changing priorities within cities



# Y-PLAN Institutional Partner: “Region”



## **Bridge:**

Working across cities and districts gets to the core of urban inequality, focusing on issues/epidemics such as gentrification and displacement



## **Divide:**

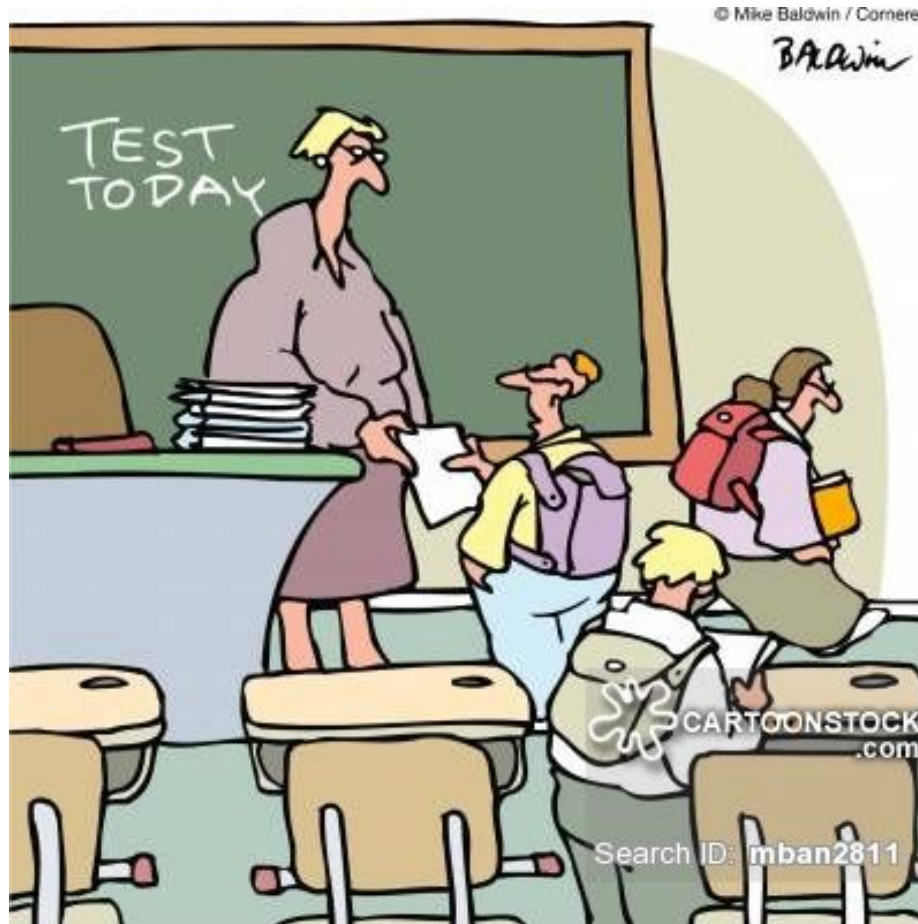
School districts are historically not “zoned” within cities or regions - very little institutional alignment among schools, cities and counties



CENTER FOR  
CITIES+SCHOOLS  
UNIVERSITY OF CALIFORNIA BERKELEY

# Y-PLAN

## Questions + Dialog



“I’m afraid I still have more questions  
than answers.”



**CENTER FOR  
CITIES+SCHOOLS**  
UNIVERSITY OF CALIFORNIA BERKELEY

# Thank You!

y-plan.berkeley.edu  
citiesandschools.berkeley.edu



Y-PLAN



@YPLANBerkeley @Citiesschools



YPLANBerkeley