
Changes in Whittier: Growing Needs & Growing Interests

Stephanie Carmona, M.A.
Katherine Lazo, M.A.



Community Education Program Initiative

Different Technology Classes

Boys & Girls
Club Of
Whittier

2015



Evergreen
Elementary

Fall
2016-2017

Whittier
Senior
Community
Center

Summer 2019

Parnell
Senior
Community
Center

Spring 2020

Longfellow
Elementary

Fall 2019



YMCA
Uptown
Whittier

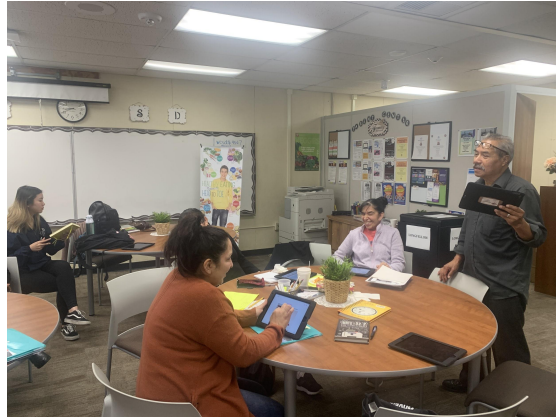
Spring 2020

YMCA
East Whittier

Spring 2020

Longfellow Elementary

- We use the Parent Center through the Whittier City School District
- iPads provided by school
- Group sessions
- Ran by undergrads



Whittier City Community Center



- Cell phone training sessions + other tec
- One on one sessions
- Appointment based/walks ins welcomed
- 15-30 min sessions
- Undergrads run sessions

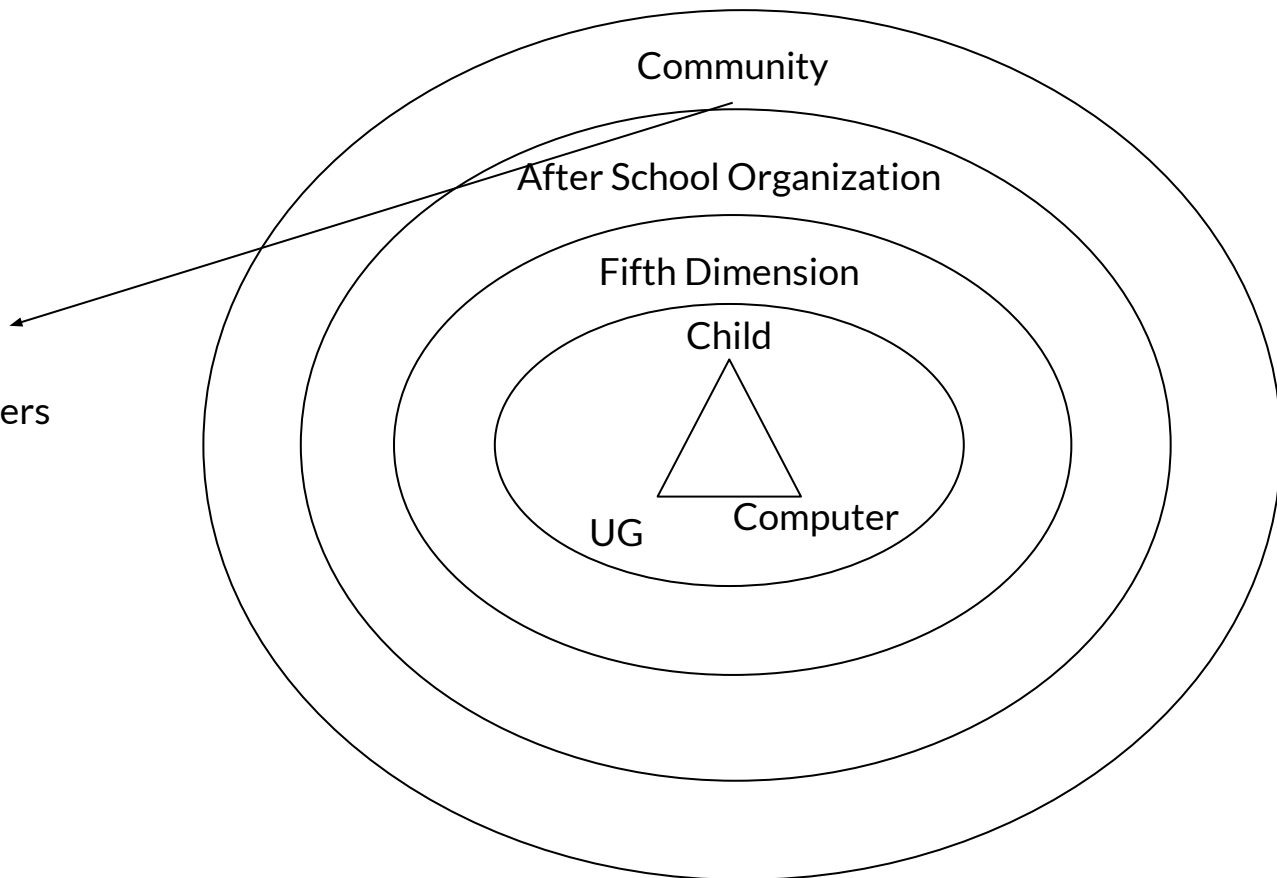


Whittier Fifth Dimension



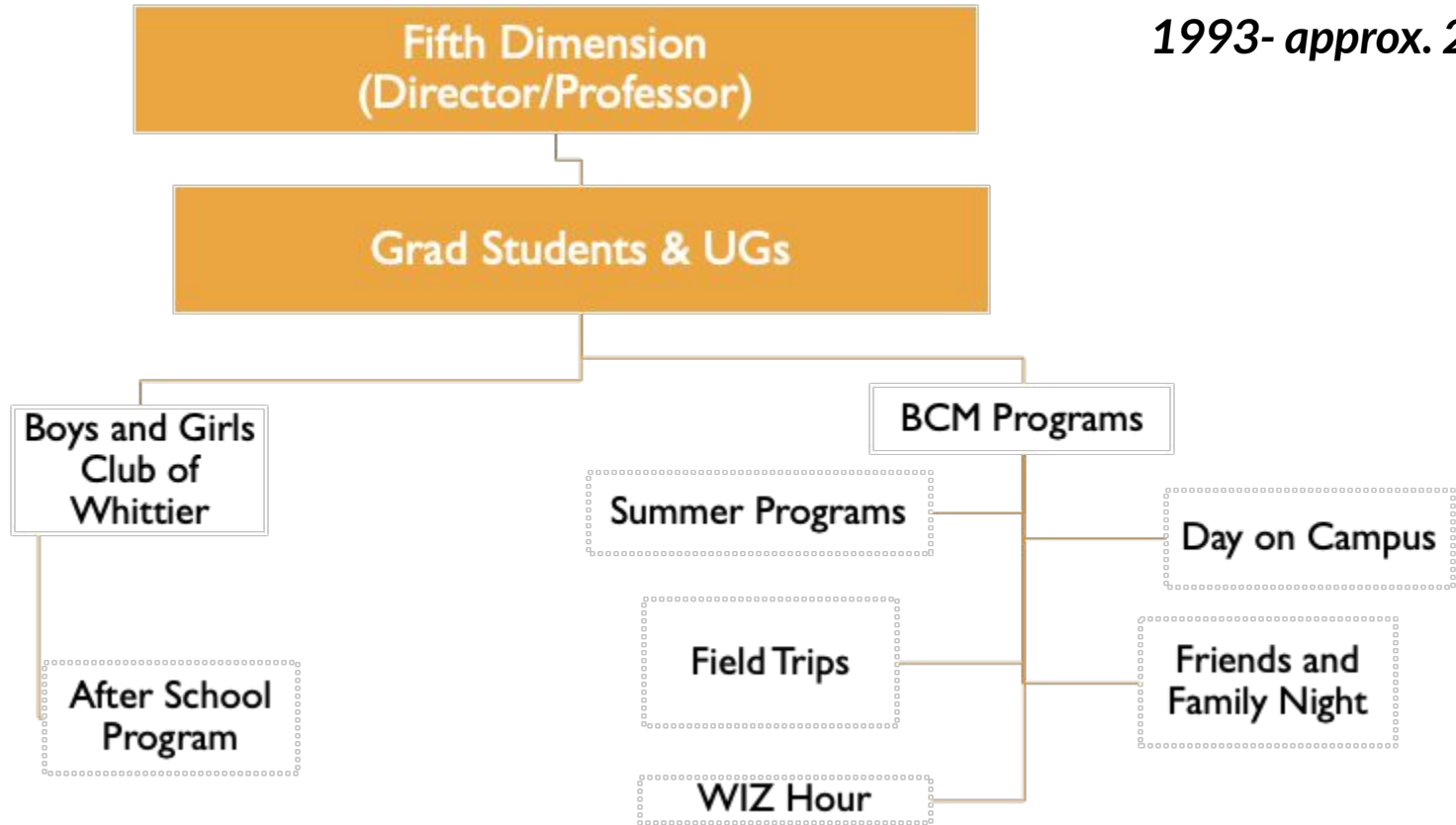
Context

- Parents/Family
- Community Members
- University





1993- approx. 2015



**BCM Community Education Programs
(Director)**

2015-2017

Grad Students & UGs

**Community Education Parent
Initiative
(Coordinator) w/ UG Help**

BCM Programs

BGCW

BCM Programs

Day on
Campus

Summer
Programs

Field Trips

Friends and
Family
Events

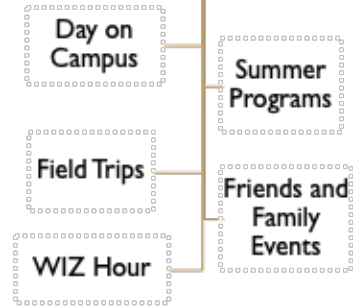
WIZ Hour

After School
Program

CEPI Computer
Class

CEPI Zumba

Community
Events



BCM Community Education Programs
(Director)

2017-2018

Fifth Dimension
(Director, Grads, UGs)

Community Education Program Initiative
(Stephanie Carmona, Program Manager) w/ UG
Help

BCM Programs

BGCW After
School Program

Evergreen
Elementary After
School Program

BGCW
Computer Class

Evergreen
Elementary
Computer Class

Partnerships

Day on Campus

Summer
Programs

Field Trips

Friends and
Family Events

WIZ Hour

Fifth Dimension

EDUC/CHDV

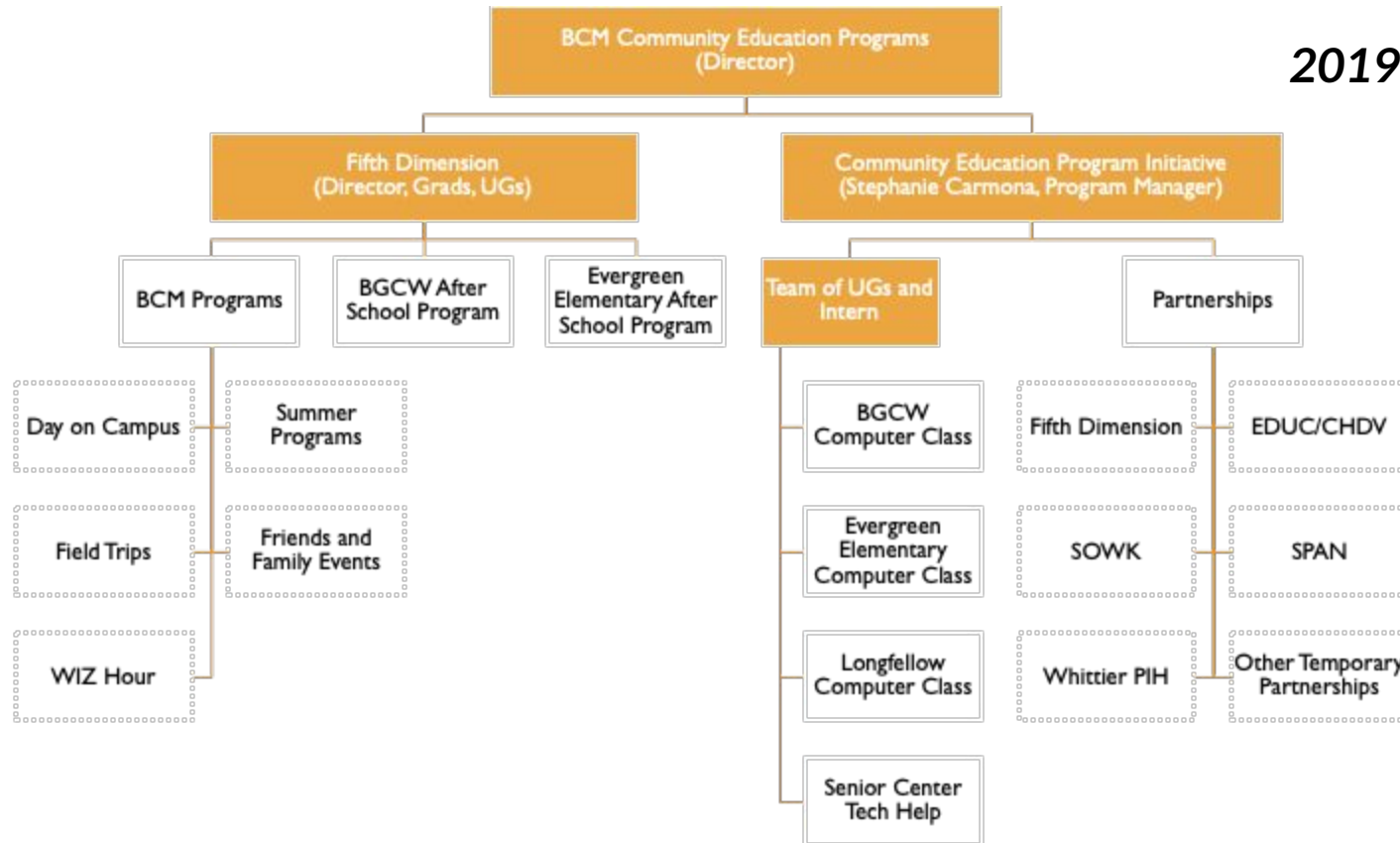
SOWK

SPAN

Whittier PIH

Other Temporary
Partnerships

2019-2020



Questions Being Asked by Administration

- How can Fifth Dimension expand?
- Where should CEPI belong organizationally?
- Where should Fifth Dimension be organizationally?
- Are there ways to consolidate programming? (Day on Campuses)
- Are funds being used to their “fullest” potential?
- Should CEPI have a course? Could it be given one?

Questions I've Been Asking

- What's essential for Fifth Dimension to continue to be successful? (for the children, family, partners, undergrads/grads?)
- How do I communicate the systems of our programs when they've become ingrained?
- What is the relationship between a Community Engagement Program and the Education Department?
- Where is there compromise to be found?
- How can all sides start speaking the "same language"?
- How does my identity come into play?
- How to establish a system of Fifth Dimension run by an untenured faculty/staff

Thanks!

Stephanie Carmona, MA
scarmona@whittier.edu

Katherine Lazo, MA
klazo@whittier.edu